

# AED Trainer | XFT-120C+ | Rev. 10

*with Replaceable Language/Scenario Card*

Directions for Use

- Thank you for purchasing XFT® AED Training Unit
- Please read the instruction manual carefully and thoroughly before operating this device
- Also please keep it available for future reference

# Directions for Use

## Product Introduction

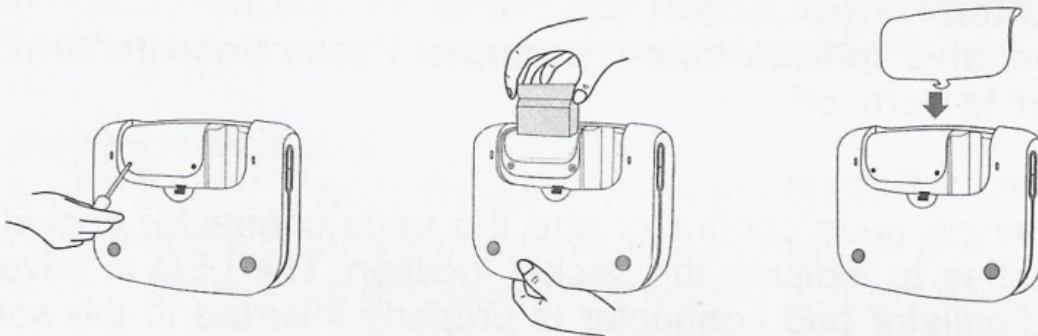
The XFT-120C+ AED Trainer is designed to effectively train emergency responders in the use of an Automatic External Defibrillator (AED). This training unit provides a variety of pre-programmed scenarios to help responders become familiar with an AED and allow them to demonstrate the basic skills necessary to use an AED in an emergency.

XFT-120C+ AED Trainer provides simulated shock delivery. To ensure safety during training, it has no high-voltage capabilities, and cannot deliver a shock.

**NOTE:** Before using a real clinical AED, the responder should have completed an appropriate responder training program. Having completed such a course, they should demonstrate a proficiency in performing Basic Life Support skills; and knowledge of applicable medical protocols and procedures.

## Set Language

Insert the plug-in card to install language



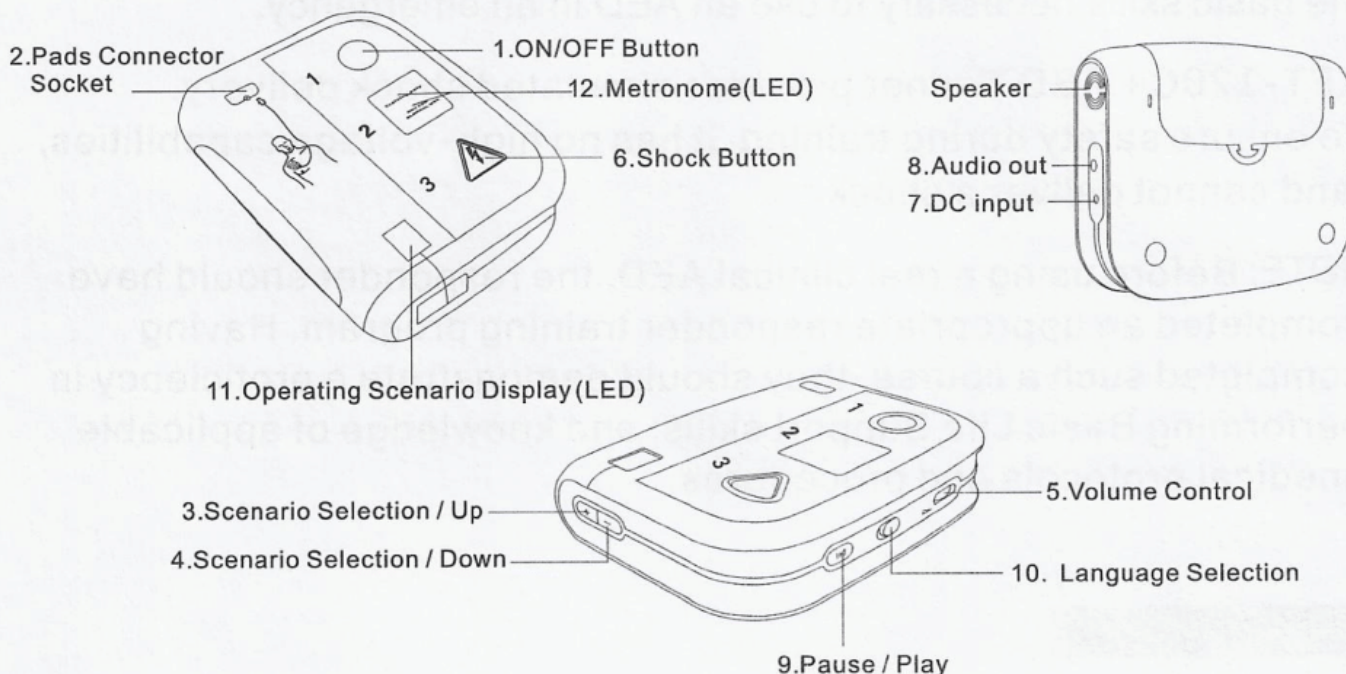
A replaceable language/scenario card is included. Users can purchase the basic unit, and then buy additional plug-in cards separately for different languages, such as English, Spanish, Italian, Dutch etc. New cards will become available to support any change to AED Guidelines.

# Directions for Use

## Overview

### Product Contents:

Main Body, Remote Control, Plug-in Card, Training Pads, Wire Connectors, Instruction Manual, Storage Bag, Adapter.



## AED Trainer Main Body

### 1.ON/OFF Button

Turn unit on and initiate voice prompts. Press once to turn on. Press again to turn off.

### 2.Pads Connector Socket

Insert the training pads connector into the pads connector socket. The LED flashes to indicate the socket location. The LED is covered when the defibrillator pad connector is properly inserted in the socket.

### 3.Scenario Selection / Up

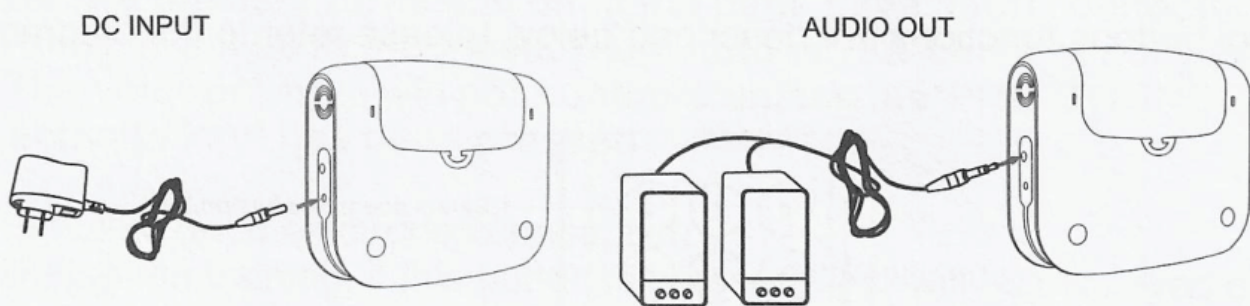
Press this button, the display prompts scenario selection from 0 to 9.

### 4.Scenario Selection / Down

Press this button, the display prompts scenario selection from 9 to 0.

## Directions for Use

5. Volume Control  
Control the voice prompt volume during use.
6. Shock button  
Activate simulated shock delivery. The button flashes when the unit is ready to deliver a simulated shock.
7. DC input  
To enable the AED Trainer to run from Mains Power.  
Please use the adapter with DC4.5V/300mA.  
(Note: Don't use batteries while an adapter is connected)
8. Audio out  
All external speakers can be connected to the AED Trainer.



9. Pause/Play  
The pause function can temporarily stop all operations of the unit.  
Press once to pause. Press again to continue playing.
10. Language Selection  
The XFT-120C+ AED Trainer can be bilingual. The user can change voice prompts in different language by this toggle switch.  
"=" or "≡" will be displayed in the LED display window.
11. Operating Scenario Display (LED)  
Display selected scenario number.
12. Metronome(LED)  
Flash lights when the unit is counting out the 2 minutes during CPR.

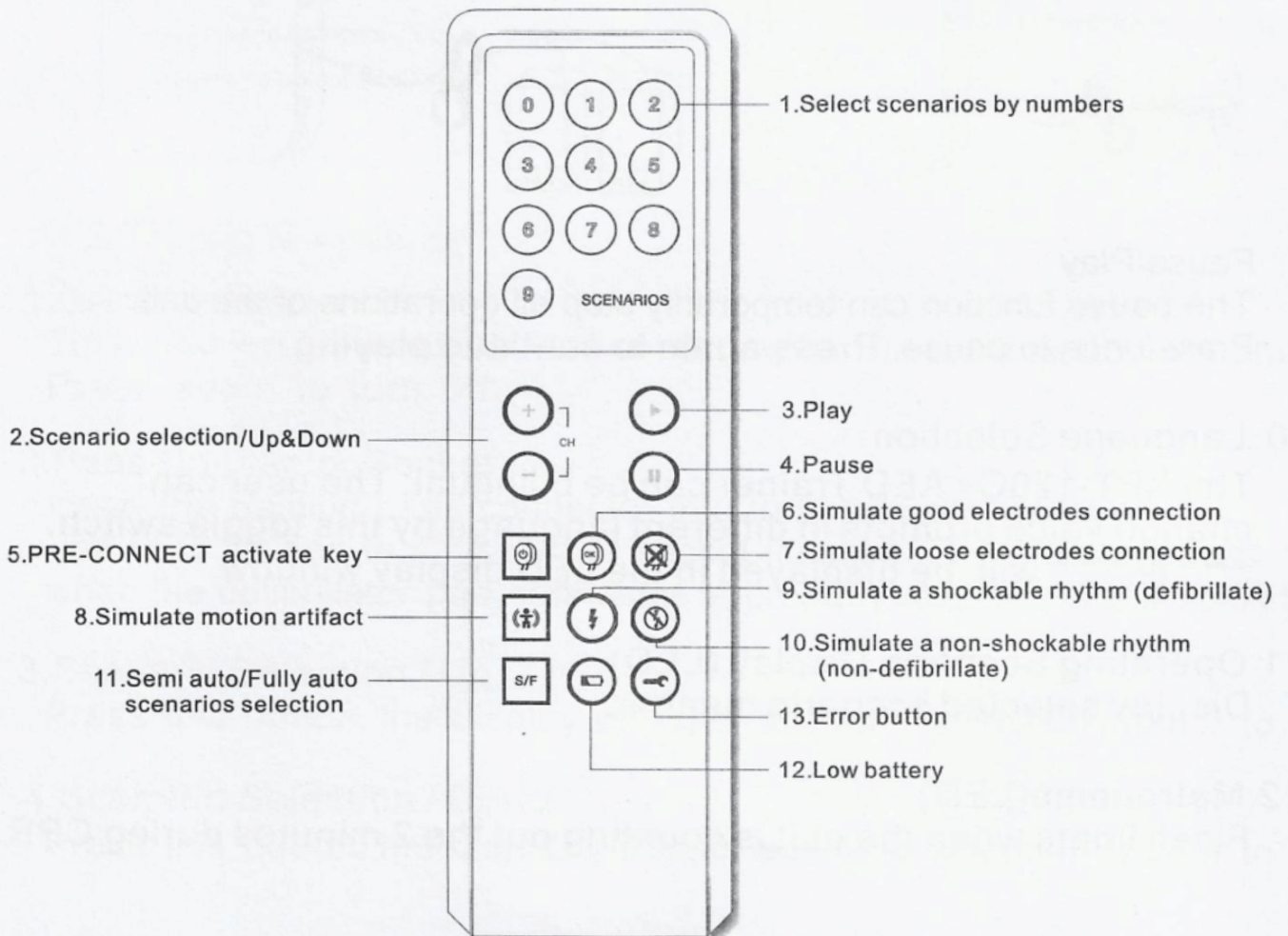
# Directions for Use

## Automatic Shut Off

1. Under the 10 scenarios, if there is no operation after 5 cycles, the AED Trainer will be turned off automatically.
2. If the remote control is used to simulate a shockable or a non-shockable rhythm, the AED Trainer will be turned off if there is no operation after 5 cycles.
3. Low battery:  
During the operation, if low power is detected, the AED Trainer will be turned off automatically after 10 seconds.
4. When paused with no operation, the AED Trainer will be turned off after 8 minutes.

## Remote Control

Control buttons functions are described below (please refer to the diagram).



## Directions for Use

---

1. Scenario Selection  
Select scenarios by numbers.
2. Scenarios Selection / Up&Down  
When either of these buttons are pressed, the display prompts a change in scenario selection.
3. Play Button: Resumes the activity from the point at which it was paused.
4. Pause Button: Freezes all activity in the trainer. Pause is indicated by "||" in the LED display window.
5. PRE-CONNECT activate key (optional)  
Only used for Semi auto /Fully auto selectable program.  
Before the user turns unit on, if the pads have been connected firmly, it will be Pre-connect Semi Auto or Pre-connect Fully Auto. The voice prompts will not continue unless the "PRE-CONNECTED activate key" has been pressed.
6. Simulate good electrodes connection  
During the training, if this button is pressed, "H" will be displayed on the main body. It simulates good electrodes connection. The user can choose related scenarios to practice.
7. Simulate loose electrodes connection  
During the training, if this button is pressed, "L" will be displayed on the main body. It simulates loose electrodes connection. The user can choose related scenarios to practice.
8. Simulate motion artifact  
During the training, if this button is pressed, "E" will be displayed on the main body.
9. Simulate a shockable rhythm  
During the training, if this button is pressed, "C" will be displayed on the main body. It simulates a shockable rhythm. The user can choose related scenarios to practice.

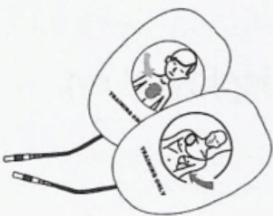
## Directions for Use

---

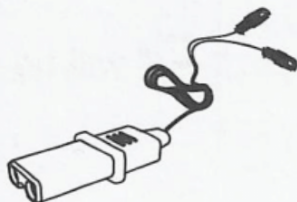
10. Simulate a non-shockable rhythm  
During the training, if this button is pressed, "N" will be displayed on the main body. It simulates a non-shockable rhythm. The user can choose related scenarios to practice.
11. Semi auto/Fully auto scenarios selection (optional)  
Select between semi automatic scenarios and fully automatic scenarios.
12. Low Battery  
During the training, if this button is pressed, "L" will be displayed on the main body. A voice prompts "low battery", and then the current scenario is continued.
13. Error Button  
During the training, if this button is pressed, it gives "tick" sound, and "E" is displayed on the main body, the voice prompts are stopped, the "Tick" sound is given again after 10 seconds and will be continued until the AED Trainer is turned off.

## Other Components

Training Pads



Wire Connector



Plug-in card



Instruction Manual



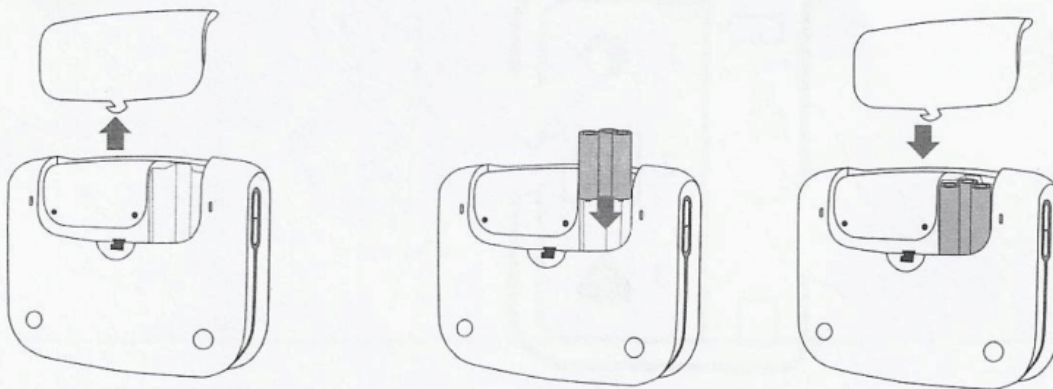
Storage Bag



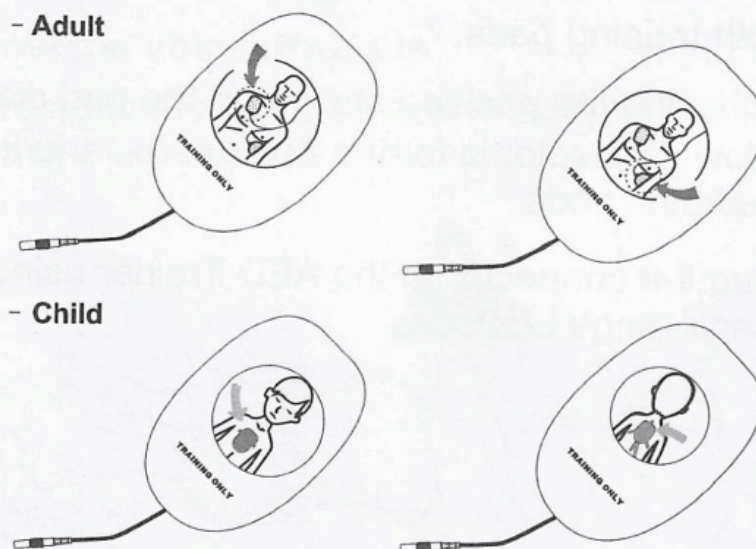
# Directions for Use

## Battery Insertion

- 1) Open the battery compartment following the arrowhead direction.
- 2) Put in 3 AA batteries, and note the polarity. (Note: The real clinical AED maybe use different batteries.)
- 3) Reposition the battery compartment's cover.
- 4) Please use good quality batteries , to avoid malfunctions caused by leakage.
- 5) The AED Trainer prompts users to replace batteries when the run low.



## Training Pads



*Note: The training pads are for training use only and will not function with an actual clinical AED.*



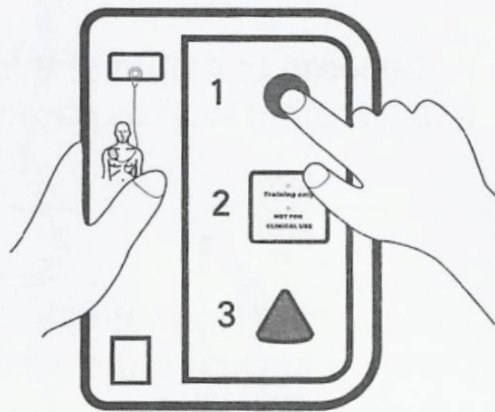
# Directions for Use

## Operating Instruction

### First, turn on the trainer and select a training scenario

Turn on the unit, then press the scenario selection button to select a preprogrammed training scenario, The operating scenario is displayed in the LED display window.

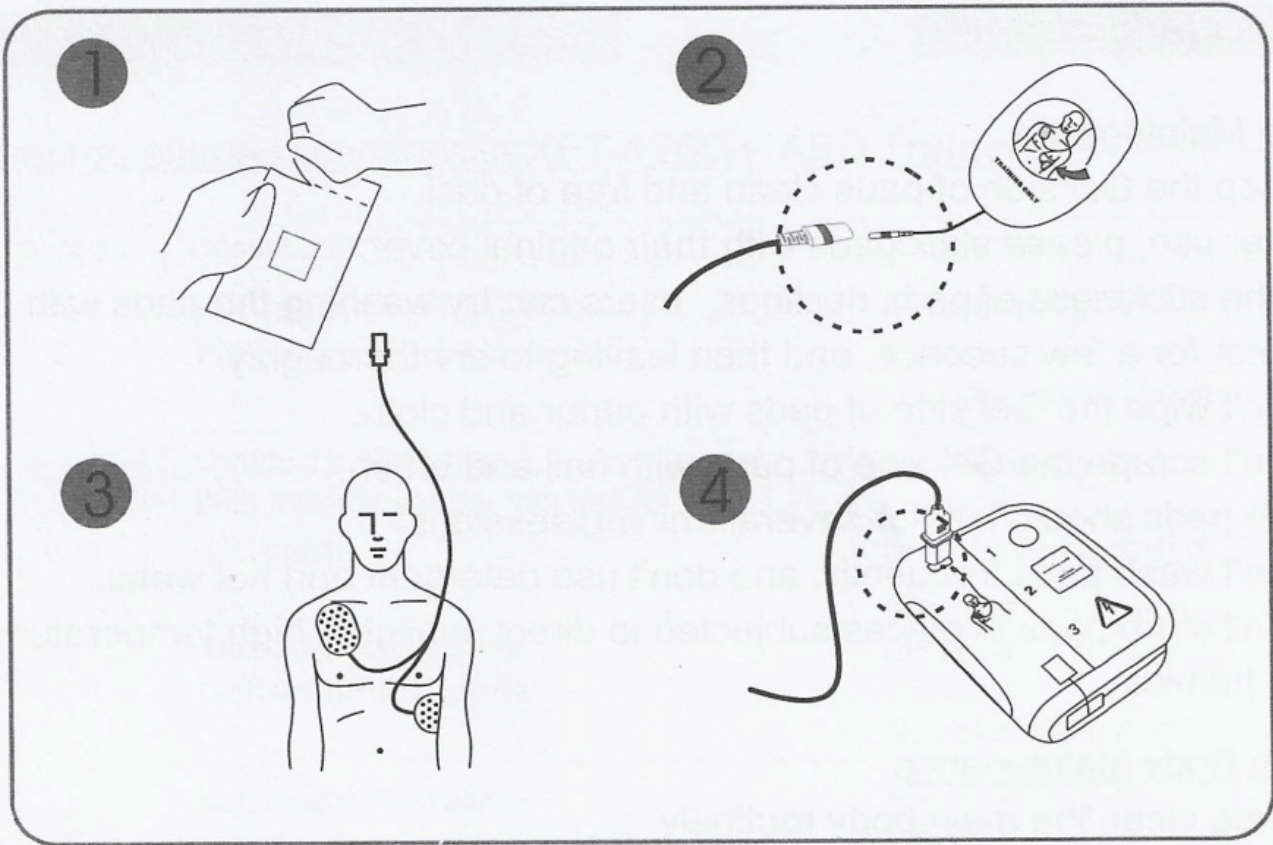
Note: The last setting will be stored and maintained even if the unit has been turned off.



### Second, connect pads

- 1) Take out the training pads.
- 2) Connect the wire with training pads.
- 3) Place pads on the chest in the position shown on the pad diagrams. Remember, the Yellow connector is for the Adult pads, and the Pink connector is for Paediatric pads.
- 4) When prompted, plug the connector to the AED Trainer using the socket with a flashing orange LED.

## Directions for Use

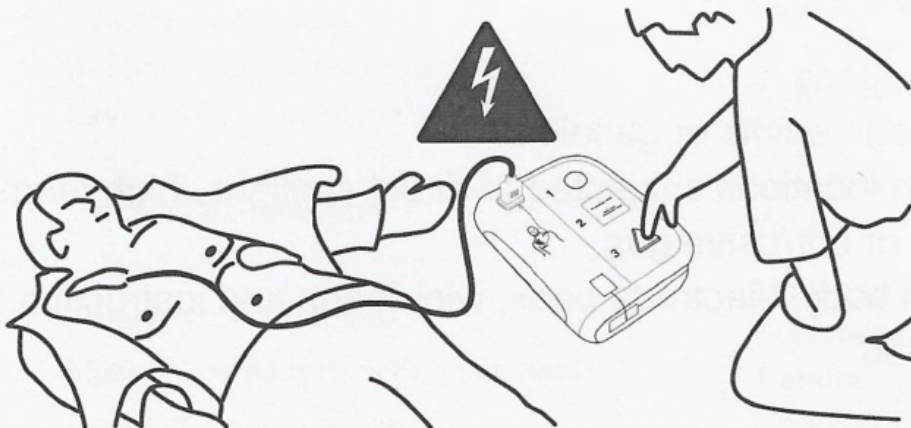


### Note:

- Don't bend or stretch wires excessively.
- Please hold the pad connector when pulling it out of the trainer.

### Third, follow the voice prompts

According to the selected scenario, operate the trainer by following the voice prompts.



# Directions for Use

---

## Storage Guidance

### Pad Maintenance

- Keep the Gel side of pads clean and free of dust.
- After use, please stick pads with their original cover.
- If the stickiness of pads declines, users can try washing the pads with water for a few seconds, and then leaving to dry thoroughly.
- Don't wipe the Gel side of pads with paper and cloth.
- Don't scrape the Gel side of pads with nail and brush.
- The pads should last for several training sessions.
- Don't wash pads frequently, and don't use detergent and hot water.
- Don't store pads in places subjected to direct sunlight, high temperature or humidity.

### Main Body Maintenance

- Wipe clean the main body routinely.
- After shutting off power, make sure to pull out the pad connector from the main body.
- If the main body is dirty, use a soft damp cloth with water or neutral detergent and wipe softly. If necessary, clean or sterilize it with a cloth soaked in medical alcohol (75% concentration max).
- Do not use abrasive cleaning substances.
- Use only damp non-abrasive cloth for cleaning. Do not soak the AED training unit with any fluid.

### Storage Precautions

- Do not store near spirits or gasoline.
- Do not store in locations subjected to direct sunlight, high temperature, moisture, dust or corrosive gas.
- Store the main body, electrode pads, wire leads and instruction manual in the bag provided.

\* Failure to comply with the above instructions may void the warranty.

# Directions for Use

## 10 Pre-programmed Scenarios

### 10 preprogrammed scenarios in XFT-120C+ AED Trainer.

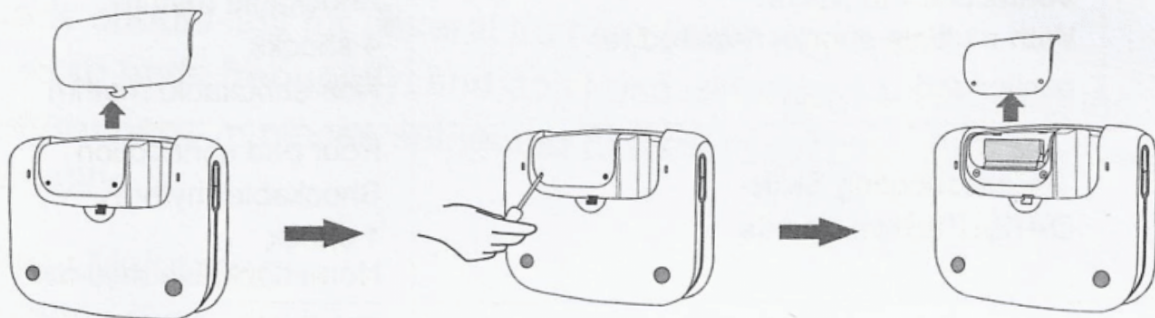
Scenarios	Description	Operation
0	Ventricular Fibrillation- With single-shock conversion	Shockable rhythm 1 shock Non-shockable rhythm
1	Ventricular Fibrillation- With multiple shocks required for conversion	Shockable rhythm 4 shocks Non-shockable rhythm
2	Troubleshooting Skills- Defibrillation pads	Poor pad connection Shockable rhythm 1 shock Non-shockable rhythm
3	Ventricular Fibrillation- With two shocks required for conversion	Shockable rhythm 2 shock Non-shockable rhythm
4	Non-Shockable Rhythm	Non-shockable rhythm throughout
5	Ventricular Fibrillation- With two shocks required for conversion	Shockable rhythm 2 shocks Non-shockable rhythm
6	Ventricular Fibrillation- With three shocks required for conversion	Shockable rhythm 3 shocks Non-shockable rhythm
7	Troubleshooting Skills- Defibrillation pads with two shocks required for conversion	Poor pad connection Shockable rhythm 2 shocks Non-shockable rhythm
8	Ventricular Fibrillation	Ventricular fibrillation throughout
9	Troubleshooting Skills- Motion, low battery, with one shock required for conversion	Motion artifacts Shockable rhythm 1 shock Non-shockable rhythm Battery low

# Directions for Use

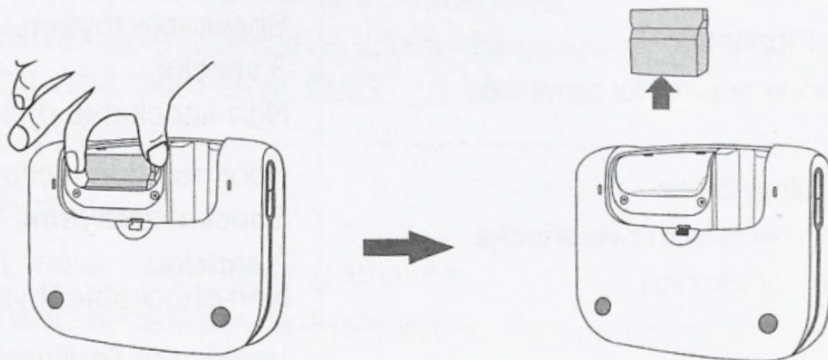
## Replacement of the Language/Scenarios Card

Note: Please take out the batteries before replace the card.

1. Remove the battery cover. Unscrew the two screws on the compartment cover to access the plug in card.

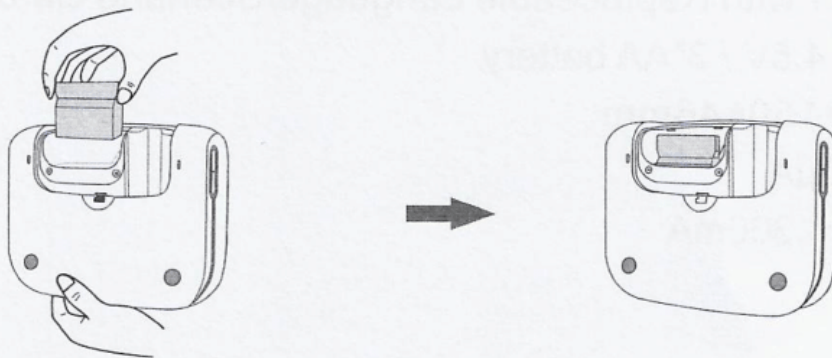


2. Use left hand to buttress the trainer body, put the thumb of right hand on the upper left side, push sideways hard to take out of the card.

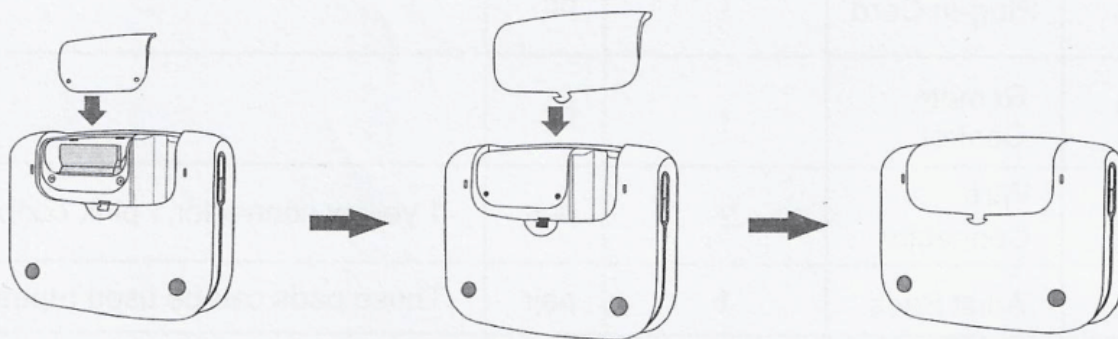


## Directions for Use

3. As showed in the following figure, use right hand to grip the card, to push inward firmly.



4. Replace the compartment cover and the main battery cover. Turn on the unit to test. If an error occurs, unplug the card and push in again.



# Directions for Use

## Specification and Product Contents

Model No. : XFT-120C +

Name: AED Trainer with Replaceable Language/Scenario Card

Power Supply: DC 4.5V / 3\*AA battery

Product Size: 190\*150\*46mm

Static Current: < 10 $\mu$ A

Maximum Current: < 300mA

### Remote Control

Power Supply: DC 3V / 2\*AAA battery

Static Current: < 5  $\mu$ A

Maximum Current: < 10mA

### Product Contents:

NO.	Contents	Quantity	Unit	Remark
1	Main Body	1	pc	
2	Plug-in Card	1	pc	
3	Remote Control	1	pc	
4	Wire Connector	2	pcs	1 yellow connector, 1 pink connector
5	Adult Pads	1	pair	These pads can be used repeatedly
6	Child Pads	1	pair	These pads can be used repeatedly
7	Instruction Manual	1	pc	
8	Storage Bag	1	pc	Nylon bag
9	Adapter	1	pc	DC4.5V / 300mA